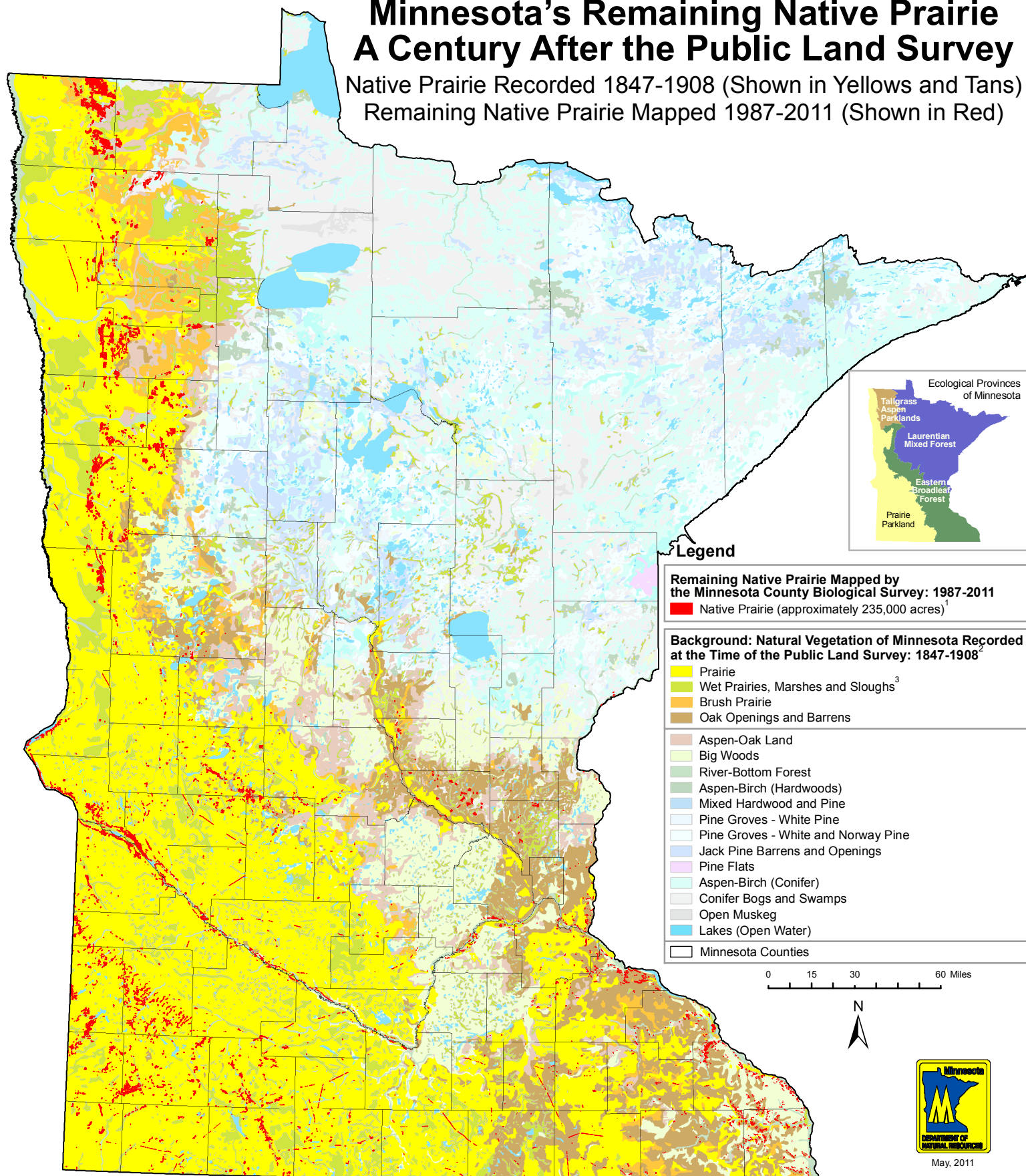


# Minnesota's Remaining Native Prairie A Century After the Public Land Survey

Native Prairie Recorded 1847-1908 (Shown in Yellows and Tans)  
Remaining Native Prairie Mapped 1987-2011 (Shown in Red)



<sup>1</sup>Prairies mapped by the Minnesota County Biological Survey (MCBS) as of May, 2011. Some of the prairies represented on this map may have been destroyed since the time of their documentation by MCBS.

<sup>2</sup>Adapted from Marschner, F.J. 1974. *The original vegetation of Minnesota, compiled from U.S. General Land Office Survey notes* [map]. 1:500,000. Redrafted from the 1930 original by P.J. Burwell and S.J. Haas under the direction of M.L. Heinselman. St. Paul: North Central Forest Experiment Station, United States Department of Agriculture.

<sup>3</sup>In the Laurentian Mixed Forest Province, this category mainly comprises marshes and sloughs. If wet prairies were present in the province, they were uncommon and likely restricted to western and southern regions bordering the Tallgrass Aspen Parklands and Eastern Broadleaf Forest provinces.